



Manifold Way,  
Wednesbury, WS10 0GB

Offers in the Region Of £260,000



Offers in the Region Of £260,000

3  2  2 





## Property Specification

Well Presented Family Home  
Three Bedrooms & En-Suite Shower room  
Lounge & Dining Area  
Ground Floor WC  
Sought After Modern Development

### Porch

Living Room 4.34m (14'3") x 3.27m (10'9")

### WC

Kitchen 2.83m (9'3") x 2.44m (8')

Dining Room 4.13m (13'7") x 3.65m (12')

### Landing

Bedroom 1 3.80m (12'6") max x 2.97m (9'9")

### En-suite

Bedroom 2 3.11m (10'2") x 2.94m (9'8")

### Bedroom 3

### Bathroom

### Garage

### Agent's Note:

Every care has been taken with the preparation of these Sales Particulars but they are for general guidance only and complete accuracy cannot be guaranteed. If there is any point which is of particular importance, professional verification should be sought. The mention of any fixtures, fittings and/or appliances does not imply they are in full efficient working order as they have not been tested. All dimensions are approximate. Photographs are reproduced for general information and it cannot be inferred that any item shown is included in the sale. These Sales Particulars do not constitute a contract or part of a contract.  
Came on the market: 3rd March 2025

### Viewer's Note:

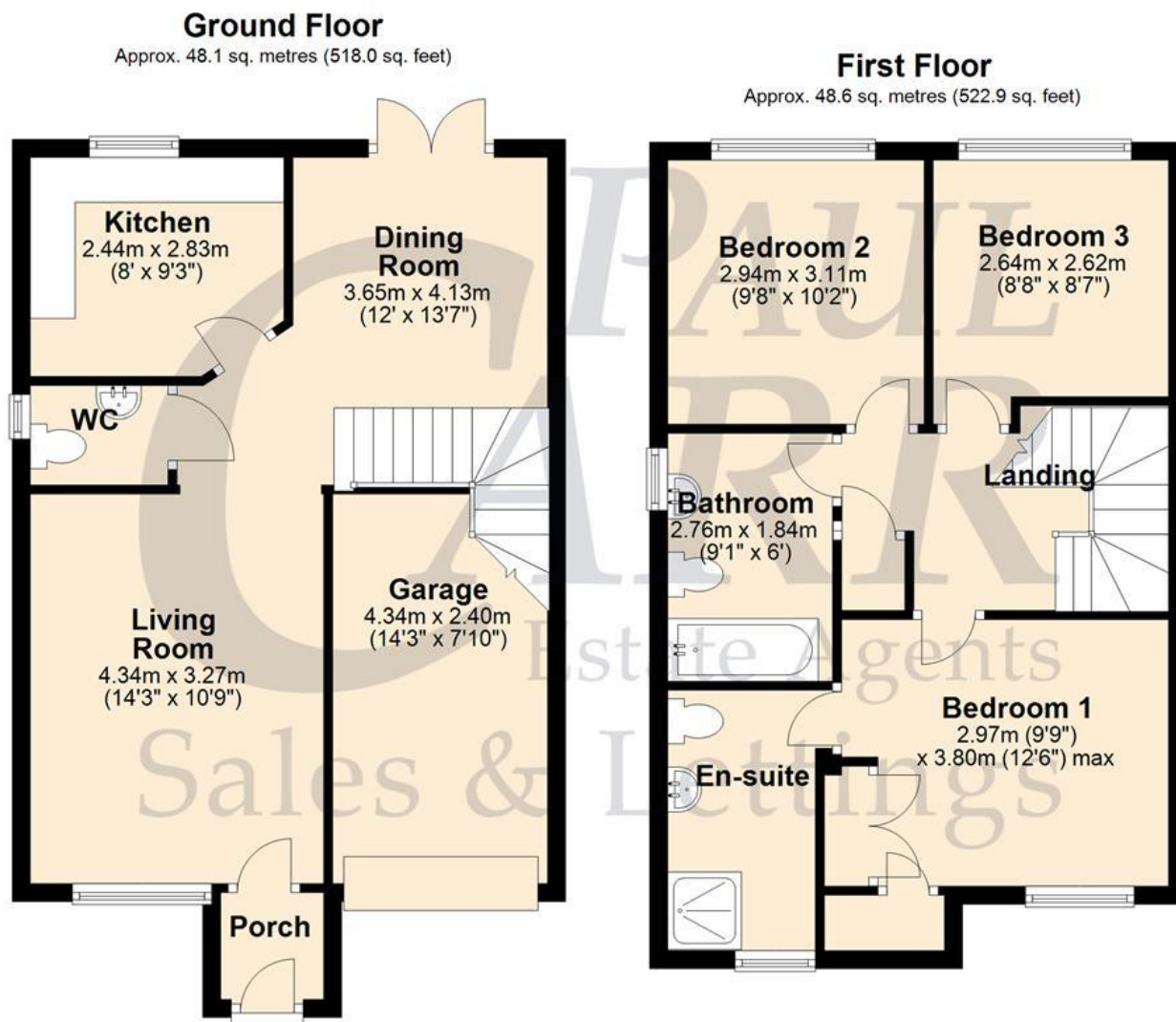
Services connected:  
Council tax band:  
Tenure: Freehold  
Other Charges:



# Floor Plan

This floor plan is not drawn to scale and is for illustration purposes only

## Energy Efficiency Rating



## Map Location

